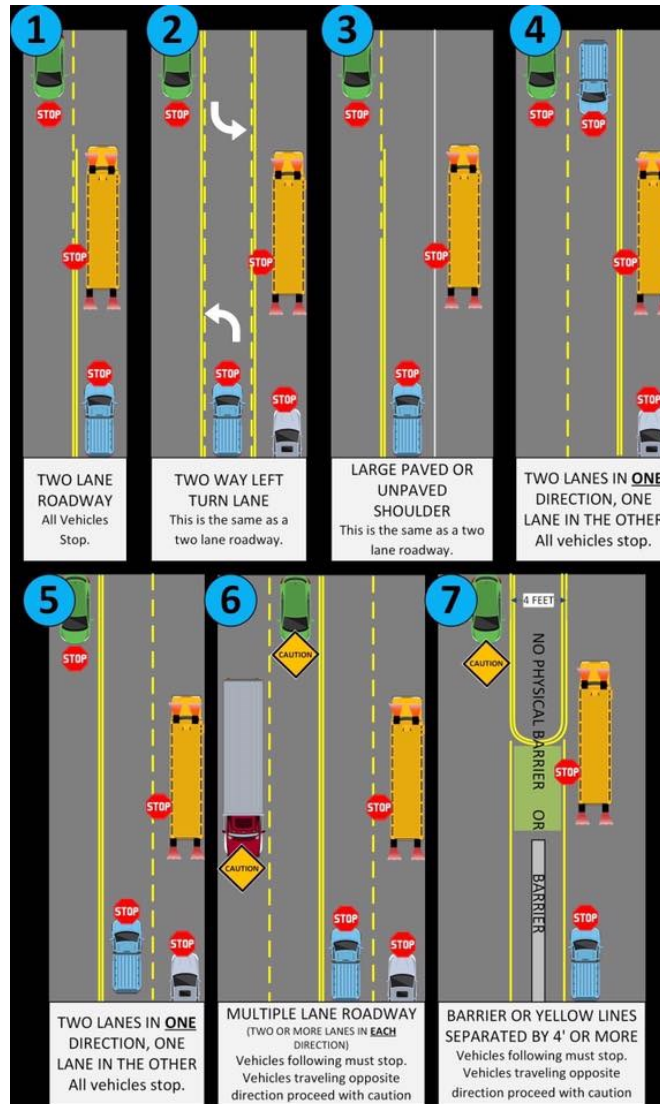


## Please Remember

- The speed limit in front of school when children are present is 25 MPH and 5 MPH in the driveway.
- Please review the Drop-Off and Pick-Up Procedures with your children.
- Set a good example for children by following the procedures.
- Remind others in a courteous manner if they are not aware of the procedures or if they forget them.
- Grace and Courtesy is one the strongest tenets of Montessori, let's practice it while dropping off and picking up our children.
- Your input is always appreciated.

## When do I STOP for a school bus?



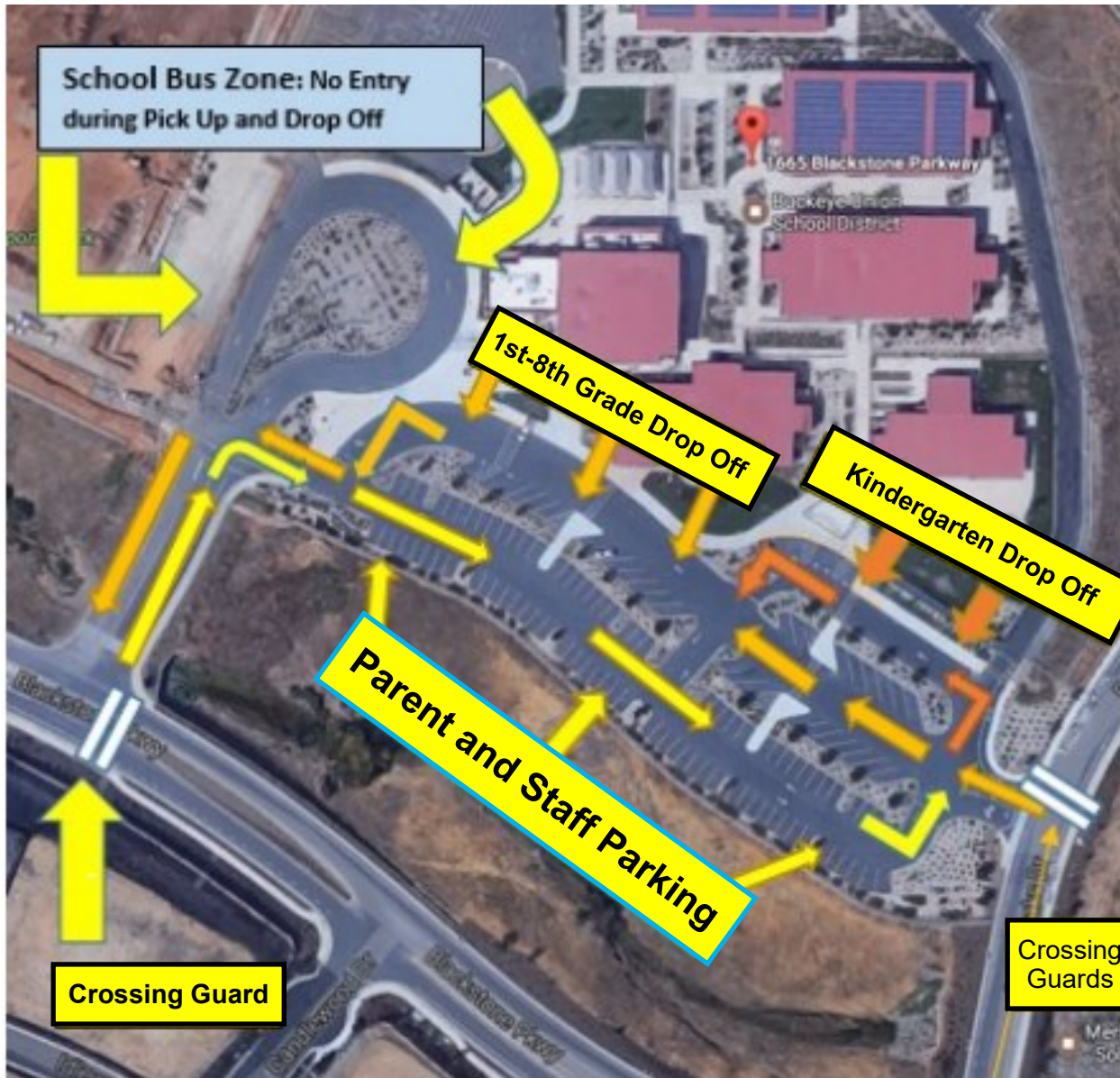
## Valley View Charter Montessori

### STUDENT DROP-OFF AND PICK-UP PROCEDURES



Arrival Traffic at Valley View  
Charter Montessori

# Valley View Charter Montessori Drop-off / Pick-up Area



## Drop-off and Pick-up Procedures

- The drop-off/pick-up lane is the **yellow curb area only**. This is marked as the “**Hug and Go**” lane. Students should enter and exit vehicles from the **passenger side only**.
- Pedestrians should cross the driveway in the painted crosswalks only.
  - The thru-traffic lane, to the left of the drop-off/pick-up lane and the lower level of the parking lot, is for exiting traffic only, **not for drop-off or pick-up**.
- Drivers must remain in their vehicles while waiting in the drop-off/pick-up lane.
- Parking is permitted in the parking lot or street only, not in the drop-off or pick-up lanes.
- Vehicles entering the drop-off/pick-up area should pull forward as far as possible and continue to do so as the traffic moves forward.
- If you are not able to immediately pick-up your child, please exit and make a second try.
- Enter the school from Royal Oaks or the main entrance.
- Only Kindergarten parents enter Kindergarten drop-off area.
- The Round About area is for buses only.
- Please no parking in the VIP parking spot unless you are the PTO dinner auction parking spot winner!